



PULSE
CENTERS



1 Insert accessory.

2 BEFORE turning machine on, ALWAYS turn intensity knob counter-clockwise until you feel it come to a **SOFT STOP**.

3 Start machine.

4 Adjust magnetic field strength to your desired comfort level.

! To change accessory turn machine OFF, see how. **NEVER** use or change accessory while machine is running.

DO NOT USE this machine with or on who have any implanted electronic medical devices.
TAKE OFF your hearing aids and ALL jewelry EXCEPT rings.
EMPTY ALL POCKETS of keys, coin, PDAs, mobile devices, or other items.
DISCLAIMER
Pulse Centers is not responsible for any injuries, damages or loss of any kind or extent of condition, if you do not read and follow the instructions and consult your medical professional immediately.

CONSULT YOUR DOCTOR IF YOU FEEL UNWELL
AND/OR STOP THE DEVICE.

PULSE

About Us

Pulse Centers has positioned itself as a world leader in high-intensity PEMF technology that optimizes general wellness at the cellular level. The unique combination of innovative Pulse Centers PEMF machines, exclusive collection of accessories, fully engaged customer and product support teams, and extensive library of Pulse Certified Virtual Training and educational resources provides a multi-tiered formula for your Pulse PEMF success.

Our Mission

Our mission is to **enhance all life**. We do this by providing an opportunity for optimized wellness and increased profitability for wellness-related professions. We strive to provide our customers with life-changing experiences by manufacturing, selling, and supporting the world's leading PEMF technology.

Our Commitment

- 1** To serve our customers with the highest of integrity in a highly responsive manner.
- 2** To effectively educate our owners with world-class training opportunities.
- 3** To fully support our owners with lifetime customer support and our exclusive Pulse Centers Warranty.



A Passion That's Personal

Through a series of unfortunate events, I spent 20 years physically impaired, sadly recalling the thriving 27-year-old I had once been. I thought I had tried every treatment and therapy on the planet.

Then I discovered PEMF.

The first system I owned for personal use restored my physical function quickly — and then it broke down. Such great technology but so poorly delivered. There had to be a more reliable product. And so I developed one.

As founder and developer of the Pulse Centers PEMF Exercise Systems, I am thrilled to welcome you to our family of customers, our partners in putting PEMF within reach of the masses.

Pulse Centers' systems enable quick implementation and provide an attractive return on investment. We know situations differ, particularly considering the varying segments of the wellness-related industry in which PEMF can — and should — be applied.

We are proud of the reputation we've earned for superior systems and for offering a level of training and service unsurpassed within this industry. We've reached this pinnacle due to a singular motivation — to enhance all life. I vividly recalled the challenging 20 years before I learned about PEMF and I am grateful to never have to return to such a time thanks to this technology.

A handwritten signature in black ink that reads "Paul Webb". The signature is fluid and cursive, with a long, sweeping line extending from the end of the name.

FOUNDER & DEVELOPER

Warranty Information

As part of our 5-star customer experience, we pride ourselves in providing timely response and resolution for issues you may encounter. That's why we offer the complimentary 3-year Pulse Centers Warranty that includes next-business-day, domestic shipping (as location and availability permit) during the first year of ownership for warranty repairs due to defective parts or workmanship. Shipping is not included outside of the contiguous United States or Internationally.

Disclaimer: The information presented in this booklet is for your information only and is not a substitute for professional health advice. The product(s) described in this booklet are not medical devices. They are not intended for the diagnosis, treatment, or cure of any physical or medical condition. All Pulse products are meant for general wellness. If you are experiencing symptoms of a physical or medical condition, you should seek the advice of your medical professional immediately.



PEMF Powered by PULSE

from Sale to Support



Personalized Customer Support

Our expert Product Specialists are readily available to support you via phone, chat, and email, providing quick and reliable answers to your questions.



Pulse Virtual Training

Our virtual training opportunities provide the education you and your staff need to master the use of PEMF in your business.



Warranty And Repair Support

Our experienced Warranty & Repair Team is just a call or email away and happy to provide you with warranty information, troubleshooting instructions, and prompt repairs.



Pulse Certified Resource Library

In addition to our comprehensive Pulse Virtual Training, we equip our owners with guides, templates, samples, and educational tools to assist in the overall success of their personal and professional PEMF endeavors.



Advanced Educational Content

As the world-leader in PEMF technology, we keep you informed on the latest research, product application ideas, and owner success stories through our series of blogs, webinars, and collateral.

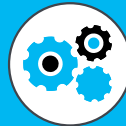
PRICE: \$13,200

OUR ULTRA-PORTABLE MACHINE

- The Pulse X is our smallest spark gap machine, but don't let its size fool you: the Pulse X is powerful, built to last, and provides all the strength needed to power any of the exclusive Pulse Accessories.
- The compact Pulse X is approximately 23 lb, enclosed in high-quality, high-impact plastic for durability, and comes with a shoulder strap for easy travel.
- This machine's lightweight design allows for easy transport for pulsing on-the-go. It's also the perfect size for renting to clients.
- The spark gap assembly has moving parts that require scheduled maintenance for reliable performance.
- All of our machines are backed by the protection of our complimentary Pulse Centers Warranty.



SPECIFICATIONS



Mechanical



Single Accessory Capability



One-Dial Control

DIMENSIONS - 17" L x 9" W x 13.5" H
WEIGHT - 23 lb

COMPATIBLE ACCESSORIES



Dual 10" Paddles



Dual 6" Rings



Square Pad



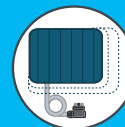
Flat Bed



Contour Bed



Chair Pad



Pet Pads

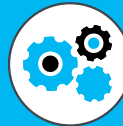
PRICE: \$18,200

OUR DYNAMIC MID-SIZED MACHINE

- The Pulse X1 is our strongest spark gap machine. With approximately 30% more strength than the Pulse X and 70% of the power of the Pulse XL Pro, this versatile machine is the perfect mid-sized system.
- The Pulse X1 is enclosed in high-quality aluminum for maximum protection of the internal system, durability, and professional appearance.
- Dual accessory capability allows for more session customization.
- Set your timer as desired, from 2 to 90 minutes, or use the infinity setting to go as long as you want.
- The spark gap assembly has moving parts that require scheduled maintenance for reliable performance.
- All of our machines are backed by the protection of our complimentary Pulse Centers Warranty.



SPECIFICATIONS



Mechanical



Dual Accessory Capability



One-Dial Control

DIMENSIONS - 15" L x 8" W x 26" H
WEIGHT - 39 lb (+1lb Wheels)

COMPATIBLE ACCESSORIES



Dual 10" Paddles



Dual 6" Rings



Square Pad



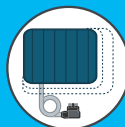
Flat Bed



Contour Bed



Chair Pad



Pet Pads

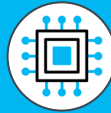
PRICE: \$31,200

OUR MOST INNOVATIVE LUXURY PEMF MACHINE

- Our strongest, most innovative system to-date provides up to double the power of the Pulse X and 30% more power than the Pulse X1.
- The Pulse XL Pro is enclosed in high-quality aluminum for maximum protection of the internal system, durability, and professional appearance.
- The Pulse XL Pro employs innovative solid-state engineering to provide smoother pulses and a more comfortable user experience.
- Power up to two accessories simultaneously with the Pulse XL Pro's dual accessory outlets, allowing for a more customizable pulsing experience.
- The Pulse XL Pro features 3 separate controls for ultimate user control of pulses per second, magnetic field strength, and session time.
- This innovative solid-state system requires no regular maintenance.
- All of our machines are backed by the protection of our complimentary Pulse Centers Warranty.



SPECIFICATIONS



Solid State



Dual Accessory Capability



Dual Controls



DIMENSIONS - 21" L x 8" W x 25" H
WEIGHT - 35 lb (+2.6lb w/wheels)

COMPATIBLE ACCESSORIES



Dual 10" Paddles



Dual 6" Paddles



Square Pad



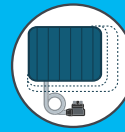
Flat Bed






Contour Bed



Chair Pad



Pet Pads

MACHINES	PULSE X	PULSE X1	PULSE XL
			
Price	\$13,200	\$18,200	\$31,200
Session Timer	x	✓	✓
Separate Controls for PPS (Pulses Per Second) and MFS (Magnetic Field Strength)	x	x	✓
Number of Accessories Powered Simultaneously	1	2	2
Dimensions	17" L x 9" W x 13.5" H	15" L x 8" W x 26" H	21" L x 8" W x 25" H
Weight	23 lb	39 lb (+1lb w/wheels)	35 lb (+2.6lb w/wheels)
Portability	Ultra-portable	Room-to-Room	Room-to-Room
Maintenance	Low	Low	No Maintenance
Pulse Centers Warranty	✓	✓	✓
Solid State Technology (No Mechanical Parts)	x	x	✓
Wheels Included	x	✓	✓
Lifetime Customer Support	✓	✓	✓
Pulse Virtual Training	✓	✓	✓

Disclaimer: The information presented in this booklet is for your information only and is not a substitute for professional health advice. The product(s) described in this booklet are not medical devices. They are not intended for the diagnosis, treatment or cure of any physical or medical condition. All Pulse products are meant for general wellness. If you are experiencing symptoms of a physical or medical condition, you should seek the advice of your medical professional immediately.

Accessories

Our state of the art Pulse Centers PEMF Accessories are created with the human anatomy in mind. Designed for comfortable and efficient PEMF delivery, our collection of accessories is handcrafted with soft, durable, leather-free Ultrafabrics®, the brand LandRover and Tesla trust for performance fabric.



Contoured Total Body Bed with Massage Table

Experience total-body PEMF with our Contoured Total Body Bed and massage table. Dimensions are 72" x 30". Custom sizing available for \$250 per 6 inches up to 108 inches.

\$3,000

Flat Total Body Bed with Massage Table

Experience total-body PEMF with our Flat Total Body Bed and massage table. Dimensions are 72" x 30". Custom sizing available for \$200 per 6 inches up to 108 inches.

\$3,000





Dual 6" Rings

The Dual 6" Rings are designed to deliver PEMF to bony areas, dense fibrous tissue, and other small areas of tissue.

\$700



Dual 10" Paddles

Our Dual 10" Paddles provide focused pulsing on joints, head, core, and muscles.

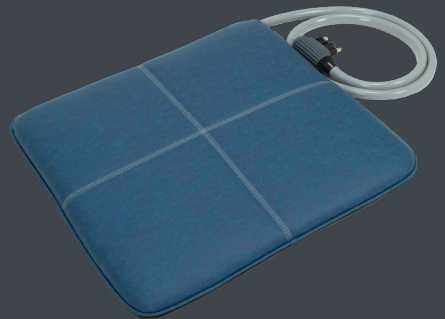
\$700



Chair Pad with Rocker

The chair pad promotes relaxation as it delivers PEMF through the core of the body. The rocker is constructed with light, durable wood.

\$1,700



Square Pad

The 23" x 21" square pad is perfect for isolating the shoulders, back, hips, and abdomen.

\$700

Pet Pads

For your domestic or smaller animals, we offer a Pet Pad for furry friends of every size.

Small: 3" x 23" x 22" – \$700

Medium: 3" x 26" x 31" – \$800

Large: 3" x 30" x 48" – \$900

Custom sizes up to 48"

Standard 6' tail with custom lengths available



All Pulse Pet Pads have an extra 1" layer of latex, giving your pets a pillow top Pulsing experience!

Need a longer accessory tail?

Our standard accessory tails are 15 feet. Need more reach between your PEMF machine and accessory? We can customize tail tubing for \$25 per additional foot, up to 25 feet.

Performance Package

Recommended investment for athletes and on-the-go PEMF Professionals

Whether you're looking for an affordable home system to support your family, grab-and-go pulsing for your active lifestyle, or a unit for your practice's rental program, the Performance Package is competitively priced to meet your needs. This system comes complete with our most portable machine and three powerful, versatile accessories for your pulsing needs.

- Pulse X Machine
- Square Pad
- Dual 10" Paddles
- Dual 6" Rings
- Branded Duffle Bag

TOTAL INVESTMENT

\$15,200



Premium Package

Recommended investment for jumpstarting your PEMF business



This package is ideal for home or any size practice, featuring our dynamic Pulse X1 machine and an assortment of full-body and focus accessories to complement any home or business.

Recommended Performance Package Includes:

- Pulse X1 Machine
- Chair Pad with Rocker
- Dual 10" Paddles **OR** Dual 6" Rings

TOTAL INVESTMENT

\$20,600

Elite Package

Recommended investment for doctors, practitioners,
and wellness professionals



Our all-inclusive Elite Package includes Pulse Centers' flagship machine, the Pulse XL Pro, combined with the full set of Pulse Centers Accessories. This package is recommended for the advanced professionals looking to offer full-service PEMF in their businesses and those looking for the ultimate PEMF ownership experience or business.

Recommended Elite Package Includes:

- Pulse XL Pro Solid State Machine
- Contoured Total Body Bed with Massage Table
- Chair Pad with Rocker
- Square Pad (Stool not included)
- Dual 10" Paddles
- Dual 6" Rings

TOTAL INVESTMENT

\$38,000

Need Financing?

To accomplish our goal of enhancing all life, Pulse Centers is dedicated to making PEMF more accessible. That's why, on top of our trusted financing partners, we also offer PULSE Manufacturer Financing to our customers. Contact us for more details.

- **NO CREDIT CHECKS**
- **NO APPLICATION FEES**
- **NO REFERENCE PULLS**
- **ONLY 25% DOWN PAYMENT** (of your total order price plus shipping and taxes. The remaining balance will be charged at 12% APR during the agreed upon terms.)
- **6 term limit options (ranging from 12 to 72 months)**
- **NO PENALTY or fee for paying off balance early**

Sample Monthly Payments		
FINANCED AMOUNT:	\$15,300	\$22,000
36 Months	\$381	\$549
48 Months	\$302	\$435
60 Months	\$256	\$368

System is owned by purchaser at end of financing.



34 Center Rd SE • Atlanta, GA 30121 • T: 888.952.7030 • www.pulsecenters.com