



PULSE



PRICING BROCHURE

About Us

Pulse PEMF has positioned itself as a world leader in high-intensity PEMF technology that optimizes general wellness at the cellular level. The unique combination of innovative Pulse PEMF machines, exclusive collection of accessories, fully engaged customer and product support teams, and extensive library of Pulse Certified Virtual Training and educational resources provides a multi-tiered formula for your Pulse PEMF success.

Our Mission

Our mission is to **enhance all life**. We do this by providing an opportunity for optimized wellness and increased profitability for wellness-related professions. We strive to provide our customers with life-changing experiences by manufacturing, selling, and supporting the world's leading PEMF technology.

Our Commitment

- 1** To serve our customers with the highest of integrity in a highly responsive manner.
- 2** To effectively educate our owners with world-class training opportunities.
- 3** To fully support our owners with lifetime customer support and our exclusive Pulse PEMF Warranty.



A Passion That's Personal

Through a series of unfortunate events, I spent 20 years physically impaired, sadly recalling the thriving 27-year-old I had once been. I thought I had tried every treatment and therapy on the planet.

Then I discovered PEMF.

The first system I owned for personal use restored my physical function quickly — and then it broke down. Such great technology but so poorly delivered. There had to be a more reliable product. And so I developed one.

As founder and developer of the Pulse PEMF Exercise Systems, I am thrilled to welcome you to our family of customers, our partners in putting PEMF within reach of the masses.

Pulse PEMF systems enable quick implementation and provide an attractive return on investment. We know situations differ, particularly considering the varying segments of the wellness-related industry in which PEMF can — and should — be applied.

We are proud of the reputation we've earned for superior systems and for offering a level of training and service unsurpassed within this industry. We've reached this pinnacle due to a singular motivation — to enhance all life. I vividly recalled the challenging 20 years before I learned about PEMF and I am grateful to never have to return to such a time thanks to this technology.

A handwritten signature in black ink that reads "Paul Webb". The signature is fluid and cursive, with a long, sweeping underline that extends to the right.

FOUNDER & DEVELOPER

Warranty Information

As part of our 5-star customer experience, we pride ourselves in providing timely response and resolution for issues you may encounter. That's why we offer the complimentary 3-year Pulse PEMF Warranty that includes next-business-day, domestic shipping (as location and availability permit) during the first year of ownership for warranty repairs due to defective parts or workmanship. Shipping is not included outside of the contiguous United States or Internationally.

Disclaimer: The information presented in this booklet is for your information only and is not a substitute for professional health advice. The product(s) described in this booklet are not medical devices. They are not intended for the diagnosis, treatment, or cure of any physical or medical condition. All Pulse products are meant for general wellness. If you are experiencing symptoms of a physical or medical condition, you should seek the advice of your medical professional immediately.



PEMF Powered by PULSE

from Sale to Support



Personalized Customer Support

Our expert Product Specialists are readily available to support you via phone, chat, and email, providing quick and reliable answers to your questions.



Pulse PEMF Virtual Training

Our virtual training opportunities provide the education you and your staff need to master the use of PEMF in your business.



Warranty And Repair Support

Our experienced Warranty & Repair Team is just a call or email away and happy to provide you with warranty information, troubleshooting instructions, and prompt repairs.



Pulse Certified Resource Library

In addition to our comprehensive Pulse Virtual Training, we equip our owners with guides, templates, samples, and educational tools to assist in the overall success of their personal and professional PEMF endeavors.



Advanced Educational Content

As the world-leader in PEMF technology, we keep you informed on the latest research, product application ideas, and owner success stories through our series of blogs, webinars, and collateral.

PULSE X™

PULSE EQ X™

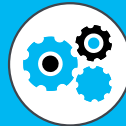
PRICE: \$13,200

OUR ULTRA-PORTABLE MACHINES

- The Pulse X and EQ-X are our smallest spark gap machines, but don't let their size fool you: this model is powerful, built to last, and provides all the strength needed to power any of the exclusive Pulse Accessories.
- The compact Pulse X and EQ-X are approximately 23 lb, enclosed in high-quality, high-impact plastic for durability, and come with a shoulder strap for easy travel.
- This machines' lightweight design allow for easy transport for pulsing on-the-go. They're also the perfect size for renting to clients.
- The spark gap assembly has moving parts that require scheduled maintenance for reliable performance.
- All of our machines are backed by the protection of our complimentary Pulse PEMF Warranty.



SPECIFICATIONS



Mechanical



Single Accessory Capability



One-Dial Control

DIMENSIONS - 17" L x 9" W x 13.5" H
WEIGHT - 23 lb

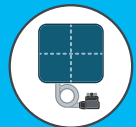
COMPATIBLE ACCESSORIES



Paddles



Rings



Square Pad



Flat Bed



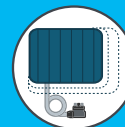
Contour Bed



Chair Pad



Animal Loops



Pet Pads

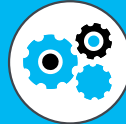
PRICE: \$18,200

OUR DYNAMIC MID-SIZED MACHINE

- The Pulse X1 is our strongest spark gap machine. With approximately 30% more strength than the Pulse X this versatile machine is the perfect mid-sized system.
- The Pulse X1 is enclosed in high-quality aluminum for maximum protection of the internal system, durability, and professional appearance.
- Dual accessory capability allows for more session customization.
- Set your timer as desired, from 2 to 90 minutes, or use the infinity setting to go as long as you want.
- The spark gap assembly has moving parts that require scheduled maintenance for reliable performance.
- All of our machines are backed by the protection of our complimentary Pulse PEMF Warranty.



SPECIFICATIONS



Mechanical



Dual Accessory Capability



One-Dial Control

DIMENSIONS - 15" L x 8" W x 26" H
WEIGHT - 39 lb (+1lb Wheels)

COMPATIBLE ACCESSORIES



Paddles



Rings



Square Pad



Flat Bed



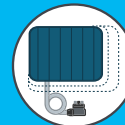
Contour Bed



Chair Pad



Animal Loops



Pet Pads

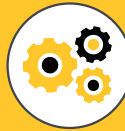
PRICE: \$18,200

OUR DYNAMIC MID-SIZED MACHINE FOR ANIMAL USE

- The Pulse EQ- X1 is our strongest spark gap machine. With approximately 30% more strength than the Pulse EQ-X, this versatile and portable machine is the perfect mid-sized system.
- The Pulse EQ-X1 is enclosed in high-quality, high-impact plastic for durability and includes an all-terrain wheeled cart for convenient portability.
- Dual accessory capability allows for more session customization.
- Set your timer as desired, from 2 to 90 minutes. Adjust the strength and pulse rate to your comfort and tolerance level with the simple, one-dial control.
- The spark gap assembly has moving parts that require scheduled maintenance for reliable performance.
- All of our machines are backed by the protection of our complimentary Pulse PEMF Warranty.



SPECIFICATIONS



Mechanical



Dual Accessory Capability



One-Dial Control

DIMENSIONS - 21" L x 12" W x 18" H
WEIGHT - 47 lb (+6.35lb w/wheels)

COMPATIBLE ACCESSORIES



Paddles



Rings



Square Pad



Flat Bed



Contour Bed



Chair Pad



Animal Loops



Pet Pads

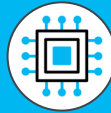
PRICE: \$31,200

OUR MOST INNOVATIVE LUXURY PEMF MACHINE

- Our strongest, most innovative system to-date provides a Pulsing experience beyond comparison.
- The Pulse XL Pro is enclosed in high-quality aluminum for maximum protection of the internal system, durability, and professional appearance.
- The Pulse XL Pro employs innovative solid-state engineering to provide smoother pulses and a more comfortable user experience.
- Power up to two accessories simultaneously with the Pulse XL Pro's dual accessory outlets, allowing for a more customizable pulsing experience.
- The Pulse XL Pro features 3 separate controls for ultimate user control of pulses per second, magnetic field strength, and session time.
- This innovative solid-state system requires no regular maintenance.
- All of our machines are backed by the protection of our complimentary Pulse PEMF Warranty.



SPECIFICATIONS



Solid State



Dual Accessory Capability



Dual Controls



DIMENSIONS - 21" L x 8" W x 25" H
WEIGHT - 35 lb (+2.6lb w/wheels)

COMPATIBLE ACCESSORIES



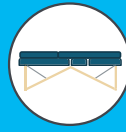
Paddles



Rings



Square Pad



Flat Bed



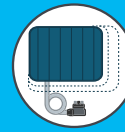
Contour Bed



Chair Pad



Animal Loops



Pet Pads

PRICE: \$20,200

TWO MACHINES IN ONE FOR DOUBLE THE PULSING POWER

- The innovative Pulse EQ-XX packs the power of TWO Pulse EQ-X machines in one convenient Pulse PEMF Yellow Box, perfect for the busy Pulse Professional!
- The Pulse EQ-XX is enclosed in high-quality, high impact plastic for durability and includes an all-terrain wheeled cart for convenient portability.
- Operate and adjust each machine independently with simple one-dial controls.
- Great for running simultaneous sessions and increased session customization.
- The spark gap assembly has moving parts that require scheduled maintenance for reliable performance.
- All of our machines are backed by the protection of our complimentary Pulse PEMF Warranty.



SPECIFICATIONS



Mechanical



Dual Machine
Capability



Independent
one-dial Controls



DIMENSIONS - 21" L x 12" W x 18" H
WEIGHT - 47 lb (+6.35lb w/wheels)

COMPATIBLE ACCESSORIES



Paddles



Rings



Square Pad



Flat Bed



Contour Bed






Chair Pad



Animal Loops



Pet Pads

MACHINES	PULSE X	PULSE X1	PULSE XL
			
Price	\$13,200	\$18,200	\$31,200
Session Timer	X	✓	✓
Separate Controls for PPS (Pulses Per Second) and MFS (Magnetic Field Strength)	X	X	✓
Number of Accessories Powered Simultaneously	1	2	2
Dimensions	17" L x 9" W x 13.5" H	15" L x 8" W x 26" H	21" L x 8" W x 25" H
Weight	23 lb	39 lb (+1lb w/wheels)	35 lb (+2.6lb w/wheels)
Portability	Ultra-portable	Room-to-Room	Room-to-Room
Maintenance	Low	Low	No Maintenance
Pulse PEMF Warranty	✓	✓	✓
Solid State Technology (No Mechanical Parts)	X	X	✓
Wheels Included	X	✓	✓
Lifetime Customer Support	✓	✓	✓
Pulse Virtual Training	✓	✓	✓

Disclaimer: The information presented in this booklet is for your information only and is not a substitute for professional health advice. The product(s) described in this booklet are not medical devices. They are not intended for the diagnosis, treatment or cure of any physical or medical condition. All Pulse products are meant for general wellness. If you are experiencing symptoms of a physical or medical condition, you should seek the advice of your medical professional immediately.

MACHINES	PULSE EQ-X	PULSE EQ-X1	PULSE EQ-XX
			
Price	\$13,200	\$18,200	\$20,200
Session Timer	x	✓	x
Number of Accessories Powered	1	2	2
Size/Dimensions	17" L x 9" W x 13.5" H	21" L x 12" W x 18" H	21" L x 12" W x 18" H
Weight	23 lb	47 lb (+6.35lbs Wheels)	47 lb (+6.35lbs Wheels)
Portable (*with cart attached)	✓	✓*	✓*
Maintenance	Low	Low	Low
Pulse PEMF Warranty	✓	✓	✓
Cart Included	x	✓	✓
Lifetime Customer Support	✓	✓	✓
Pulse PEMF Virtual Training	✓	✓	✓

Disclaimer: The information presented in this booklet is for your information only and is not a substitute for professional veterinary advice. The product(s) described in this booklet are not medical devices. They are not intended for the diagnosis, treatment or cure of any physical or medical condition. All Pulse products are meant for general wellness. If your animal is experiencing symptoms of a physical or medical condition, you should seek the advice of your licensed veterinarian immediately.

Accessories

Our state of the art Pulse PEMF Human Accessories are created with the human anatomy in mind. Designed for comfortable and efficient PEMF delivery, our collection of accessories is handcrafted with soft, durable, leather-free Ultrafabrics[®], the brand LandRover and Tesla trust for performance fabric.

Our state of the art Pulse PEMF Accessories are created for animals of every size. Designed with comfort and simplicity in mind, our collection of animal accessories are handcrafted to deliver the optimal PEMF experience.



Contoured Total Body Bed with Massage Table

Experience total-body PEMF with our Contoured Total Body Bed and massage table. Dimensions are 72" x 30". Custom sizing available for \$250 per 6 inches up to 108 inches.

\$3,000

Flat Total Body Bed with Massage Table

Experience total-body PEMF with our Flat Total Body Bed and massage table. Dimensions are 72" x 30". Custom sizing available for \$200 per 6 inches up to 108 inches.

\$3,000





Rings

The Rings are designed to deliver PEMF to bony areas, dense fibrous tissue, and other small areas of tissue.

\$700



Paddles

Our Paddles provide focused pulsing on joints, head, core, and muscles.

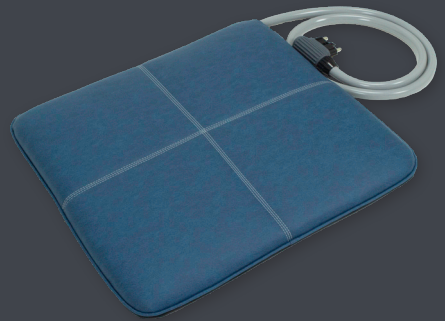
\$700



Chair Pad with Rocker

The chair pad promotes relaxation as it delivers PEMF through the core of the body. The rocker is constructed with light, durable wood.

\$1,700



Square Pad

The 23" x 21" square pad is perfect for isolating the shoulders, back, hips, and abdomen.

\$700

Animal Loops

Our unique Animal Loops come in a variety of diameters to accommodate animals of all sizes!

Small - 6" diameter - **\$700**

Medium - 10" diameter - **\$700**

Large - 18" diameter - **\$700**

XL - 28" diameter - **\$850**

XXL - 38" diameter - **\$900**



Pet Pad

For your domestic or smaller animals, we offer a Pet Pad for furry friends of every size.

Small: 3" x 23" x 22" - \$700

Medium: 3" x 26" x 31" - \$800

Large: 3" x 30" x 48" - \$900

Custom sizes up to 48"

Standard 6' tail with custom lengths available



All Pulse Pet Pads have an extra 1" layer of latex, giving your pets a pillow top Pulsing experience!

Need a longer accessory tail?

Our standard accessory tails are 15 feet. Need more reach between your PEMF machine and accessory? We can customize tail tubing for \$25 per additional foot, up to 25 feet.



Performance Package

Recommended investment for athletes and on-the-go PEMF Professionals

Whether you're looking for an affordable home system to support your family, grab-and-go pulsing for your active lifestyle, or a unit for your practice's rental program, the Performance Package is competitively priced to meet your needs. This system comes complete with our most portable machine and three powerful, versatile accessories for your pulsing needs.

- Pulse X Machine
- Square Pad
- Paddles
- Rings
- Branded Duffel Bag

TOTAL INVESTMENT

\$15,300

Basic Animal Package

The Basic Animal Package includes everything you need to get started as a Pulse PEMF Professional. Pair this accessory package with the purchase of a any Pulse PEMF machine for the perfect starter system.

Package Includes:

- Large Animal Loops
- Small Animal Loops
- Medium Animal Loops
- Branded Duffel Bag

Pulse PEMF Machine sold separately



ADDITIONAL INVESTMENT

\$2,100

Premium Package

Recommended investment for jumpstarting your PEMF business



This package is ideal for home or any size practice, featuring our dynamic Pulse X1 machine and an assortment of full-body and focus accessories to complement any home or business.

Recommended Performance Package Includes:

- Pulse X1 Machine
- Chair Pad with Rocker
- Paddles **OR** Rings
- Square Pad

TOTAL INVESTMENT

\$21,300

Elite Package

Recommended investment for doctors, practitioners,
and wellness professionals



Our all-inclusive Elite Package includes Pulse PEMF flagship machine, the Pulse XL Pro, combined with the full set of Pulse PEMF Accessories. This package is recommended for the advanced professionals looking to offer full-service PEMF in their businesses and those looking for the ultimate PEMF ownership experience or business.

Recommended Elite Package Includes:

- Pulse XL Pro Solid State Machine
- Contoured Total Body Bed with Massage Table
- Chair Pad with Rocker
- Square Pad (Stool not included)
- Paddles
- Rings

TOTAL INVESTMENT

\$38,000

Need Financing?

To accomplish our goal of enhancing all life, Pulse PEMF is dedicated to making PEMF more accessible. That's why, on top of our trusted financing partners, we also offer PULSE Manufacturer Financing to our customers. Contact us for more details.

- NO CREDIT CHECKS
- NO APPLICATION FEES
- NO REFERENCE PULLS
- ONLY 25% DOWN PAYMENT
(of your total order price plus shipping and taxes. The remaining balance will be charged at 12% APR during the agreed upon terms.)
- 6 term limit options (ranging from 12 to 72 months)
- NO PENALTY or fee for paying off balance early

Sample Monthly Payments

FINANCED AMOUNT:	\$15,300	\$22,000
36 Months	\$381	\$549
48 Months	\$302	\$435
60 Months	\$256	\$368

System is owned by purchaser at end of financing.





34 Center Rd SE • Cartersville, GA 30121 • T: 888.952.7030 • www.pulsepemf.com